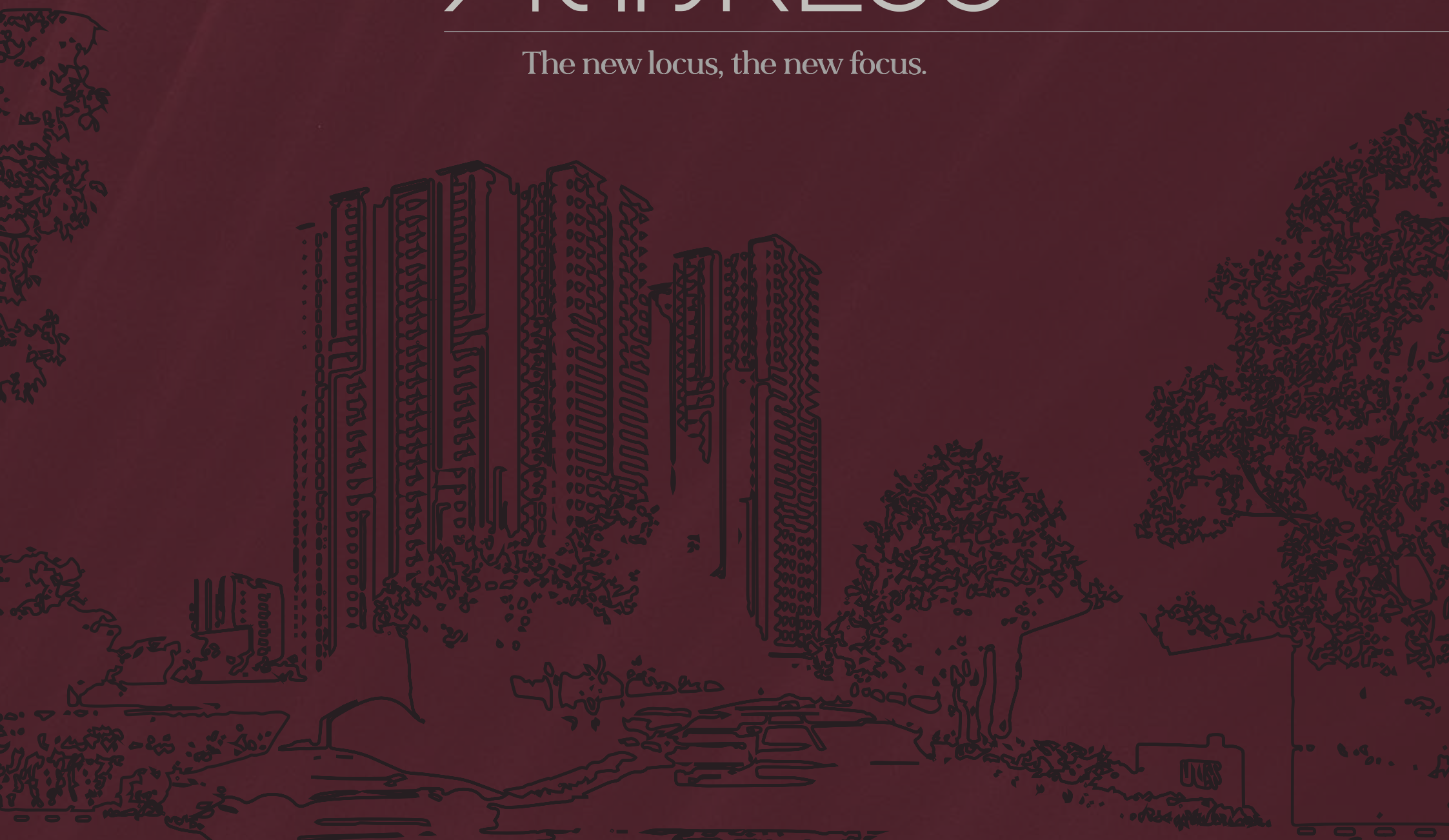


The **DSR**
ADDRESS

The new locus, the new focus.





PREPARE TO RISE,



A NEW SKYLINE IS UNLOCKING.

the
TALLEST
BUILDING
on Sarjapur Road,
is here.

Welcome to **The Address**, an iconic high-rise residential community that redefines urban luxury. With six majestic towers, this G+30 floors development offers an elevated lifestyle like no other. Nestled amidst vast open areas, The Address is designed to blend modern living with nature, offering residents an oasis of tranquility in the heart of the city.

From expansive residences with breathtaking views to an extensive array of world-class amenities, **The Address is not just a home**, it is a lifestyle destination. Whether you are **unwinding in lush green areas, indulging in** leisure activities, or connecting with a vibrant community of like-minded individuals, every moment here is crafted to enrich your life.



13.67
ACRES OF SITE AREA

84%
OPEN AREA

G+30
FLOORS

35+
AMENITIES



DSR

CLUB

01

WHY AIM FOR THE SKY, WHEN YOU CAN
LIVE AMONG THE CLOUDS.

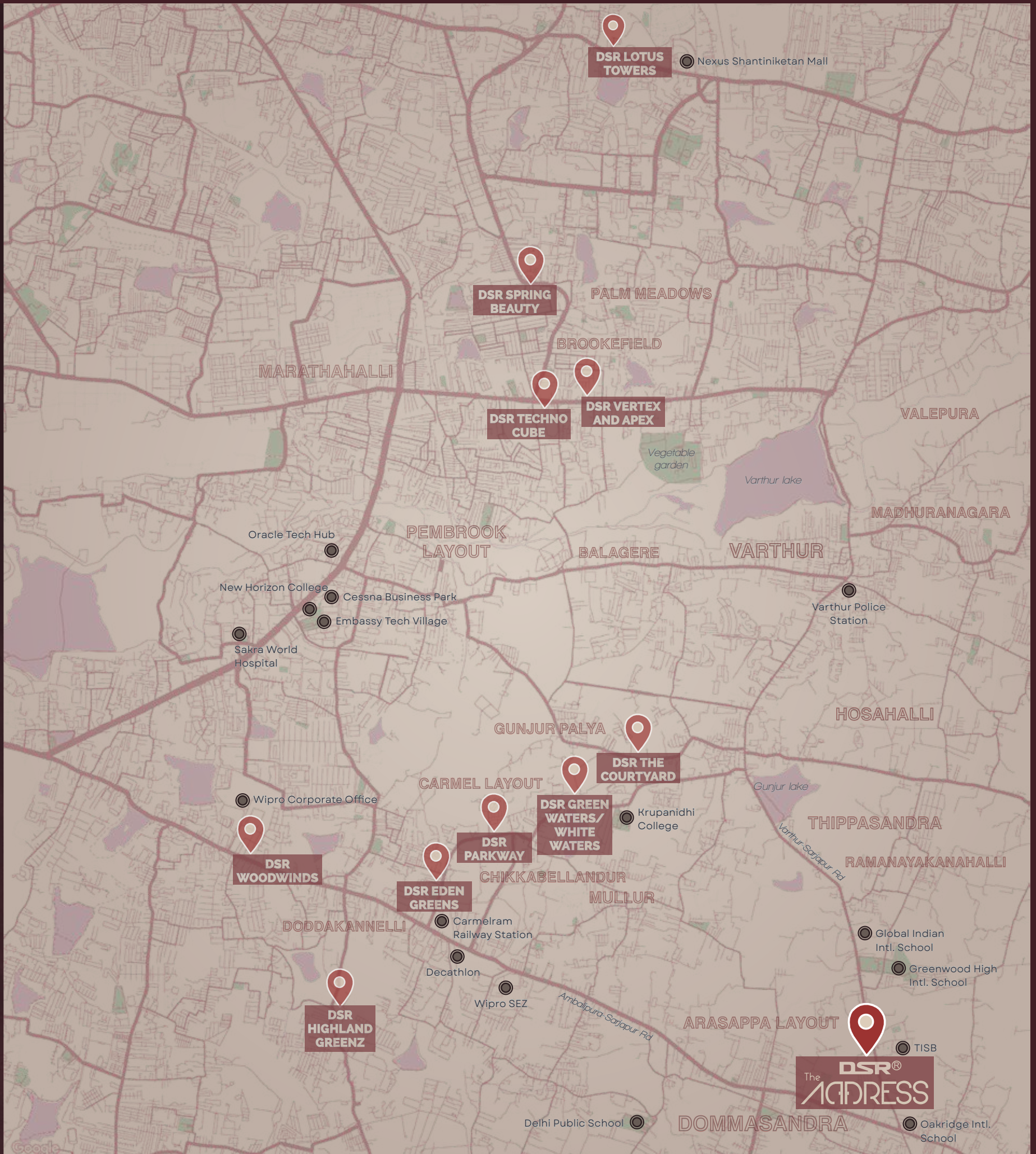


02

Discover unparalleled connectivity at The Address, strategically sited at Dommasandra, seamlessly accessible to major highways, public transport, and key landmarks. Enjoy the convenience of nearby shopping centers, schools, healthcare facilities, and recreational spaces, all within easy reach. Whether commuting to work or exploring the vibrant surroundings, experience a lifestyle where accessibility meets comfort. An **ideal home is not** just about living; it's about connecting with everything you love.

UNPARALLELED CONNECTIVITY.

7.6 km from	Decathlon	8.8 km from	Varthur Lake	10.0 km from	DSR Highland Greenz
6.9 km from	Wipro SEZ	5.9 km from	Varthur Police Station	11.0 km from	Sakra World Hospital
8.8 km from	Carmelram Rly. Station	7.6 km from	Delhi Public School (DPS)	10.0 km from	New Horizon College
9.4 km from	DSR Eden Greens	1.2 km from	Greenwood High Intl. School	10.0 km from	Embassy Tech Village
6.9 km from	DSR Parkway	1.4 km from	TISB School	9.9 km from	Oracle Tech Hub
6.1 km from	DSR Green Waters	3.0 km from	Global Indian Intl. School	11.0 km from	DSR Techno Cube
12.0 km from	Wipro Corporate Office	5.0 km from	DSR The Courtyard	11.0 km from	DSR Vertex & Apex
11.0 km from	DSR Woodwinds	5.1 km from	Krupanidhi College	15.0 km from	Nexus Shantiniketan Mall



03

DSR The Address is a luxurious high-rise residential community in Dommasandra, Bangalore, offering modern living with unmatched connectivity to the heart of the city. As you pass through our grand entry portal, you are greeted by a stunning blend of modern architecture and serene landscaping, setting the tone for a life of elegance and comfort at our community.

THE STORY BEGINS WHEN YOU STEP IN.



The entry portal at DSR The Address.



04

A Society where every neighbour is Family.

The masterplan at The Address features well-oriented blocks that maximize natural light and airflow. Each residence is meticulously crafted with Vastu principles in mind. Enjoy a harmonious lifestyle at The Address. We prioritize convenience, fitness, recreation, aesthetics and well-being, creating the perfect sanctuary for you and your family.

LEGEND

- 01. APPROACH ROAD
- 02. ARRIVAL COURT
- 03. ENTRY ARCH WITH SECURITY CABIN
- 04. CONNECTING PATHWAY
- 05. FEATURE WALLS WITH PLANTING
- 06. CYCLE TRACK
- 07. DRIVE WAY
- 08. PEDESTRIAN PATHWAY
- 09. SCULPTURE WITH PEBBLE BED
- 10. CONNECTING PATHWAY WITH WATER FEATURE
- 11. BUILDING COURTYARD WITH STEPPED PLANTING
- 12. EVA (PEDESTRIAN FRIENDLY)
- 13. WORK FROM HOME ZONE WITH WIFI CONNECTIVITY
- 14. ART'S AND CRAFT AREA
- 15. ELDER'S SEATING COURT WITH WATER BODY
- 16. BUILDING DROP-OFF
- 17. TENNIS COURT
- 18. CHILDREN'S PLAY AREA
- 19. CLUBHOUSE DROP-OFF WITH SCULPTURE AND WATER FEATURE
- 20. POOL DECK WITH LOUNGERS
- 21. FEATURE WALL WITH SHADE STRUCTURE AND INFORMAL SEATING
- 22. MAIN POOL
- 23. KID'S POOL
- 24. GOLF PUTTING
- 25. LUXE GLAMP WITH MOUND
- 26. CONNECTING PATHWAY
- 27. BASKETBALL COURT
- 28. BUS BAY WITH SHADE STRUCTURE
- 29. OUTDOOR GYM
- 30. AMPHITHEATRE WITH STAGE
- 31. MULTIPURPOSE LAWN
- 32. CAMP FIRE AREA WITH SUNKEN SEATING
- 33. SKATE PARK WITH INFORMAL SEATING
- 34. PET PARK WITH PLAZA
- 35. INFORMAL SEATING AREA
- 36. SEATING PLAZA WITH TREE COURT
- 37. STEPPED WATER FEATURE WITH SCULPTURE



FRONT-ROW SEATS, TO THE COMMUNITY OF YOUR DREAMS.



05

Welcome to DSR The Address, a picturesque haven where beauty greets you at every turn. As you enter, be captivated by the stunning landscape, adorned with vibrant flowering trees and meticulously designed pathways. This enchanting entrance sets the tone for a community that celebrates both tranquility and sophistication, promising a delightful experience every time you return home.

note to reader : this is a translucent page

05

As dusk falls, the entrance of The Address transforms into a captivating scene. Soft, ambient lighting guides you through elegant landscaping, creating a warm and inviting atmosphere. At The Address, each evening welcomes you home, offering a sense of tranquility and charm that sets the perfect tone for your night ahead. Experience a magical arrival every time you return.



note to reader : this is a translucent page

FRONT-ROW SEATS, TO THE COMMUNITY OF YOUR DREAMS.



05

Welcome to DSR The Address, a picturesque haven where beauty greets you at every turn. As you enter, be captivated by the stunning landscape, adorned with vibrant flowering trees and meticulously designed pathways. This enchanting entrance sets the tone for a community that celebrates both tranquility and sophistication, promising a delightful experience every time you return home.

As dusk settles in, the entrance of The Address transforms into a captivating scene. Soft, ambient lighting guides you through elegant landscaping, creating a warm and inviting atmosphere. At The Address, each evening welcomes you home, offering a sense of tranquility and charm that sets the perfect tone for your night ahead. Experience a magical arrival every time you return.

06

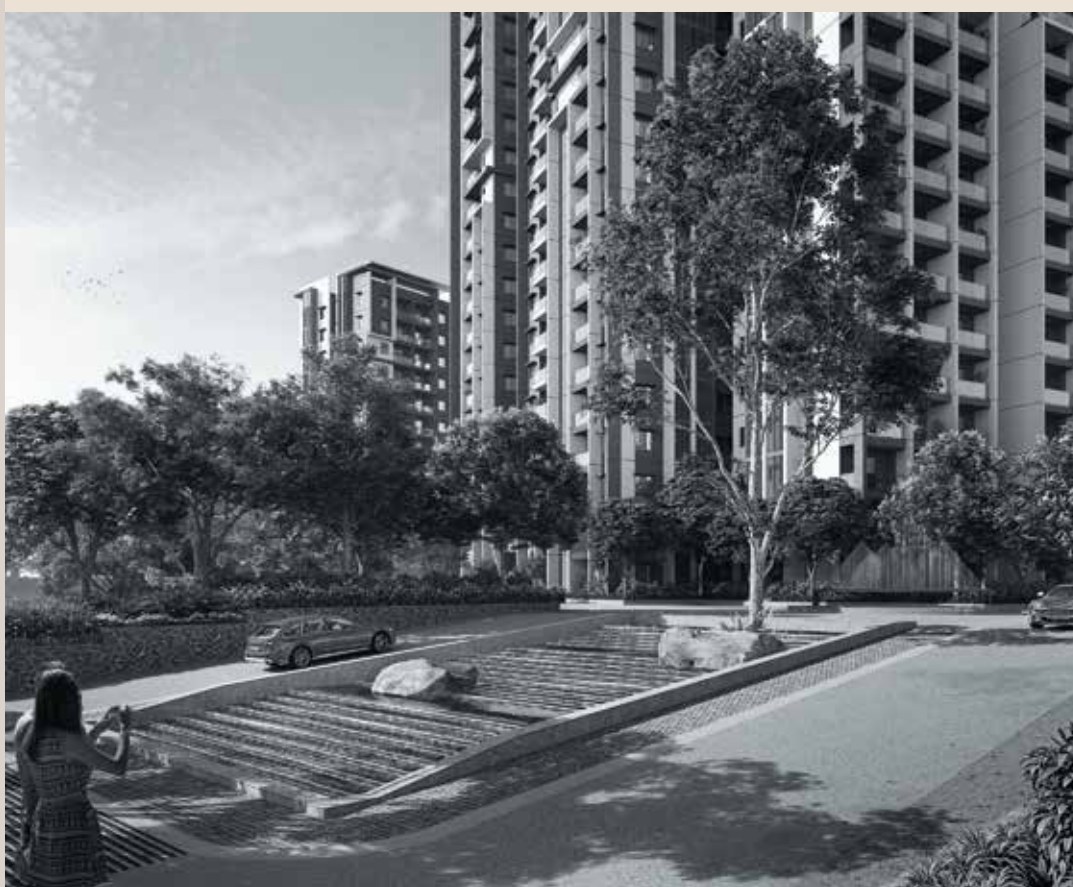


TRANQUILITY LIES WITHIN EVERY RIPPLE,
WITH SERENITY FLOWING AT EVERY CORNER.



07

DSR The Address is home to some beautiful water features in the form of visual stepped-water sculptures, as well as refreshing lily ponds. There is something about the air here.



Water features at DSR The Address.

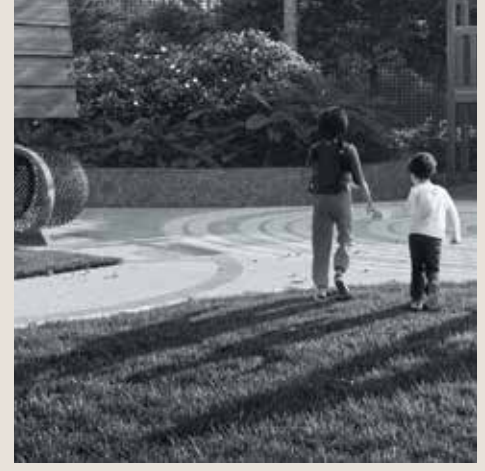
A RANGE OF AMENITIES,

BEWITCHINGLY CONVENIENT.

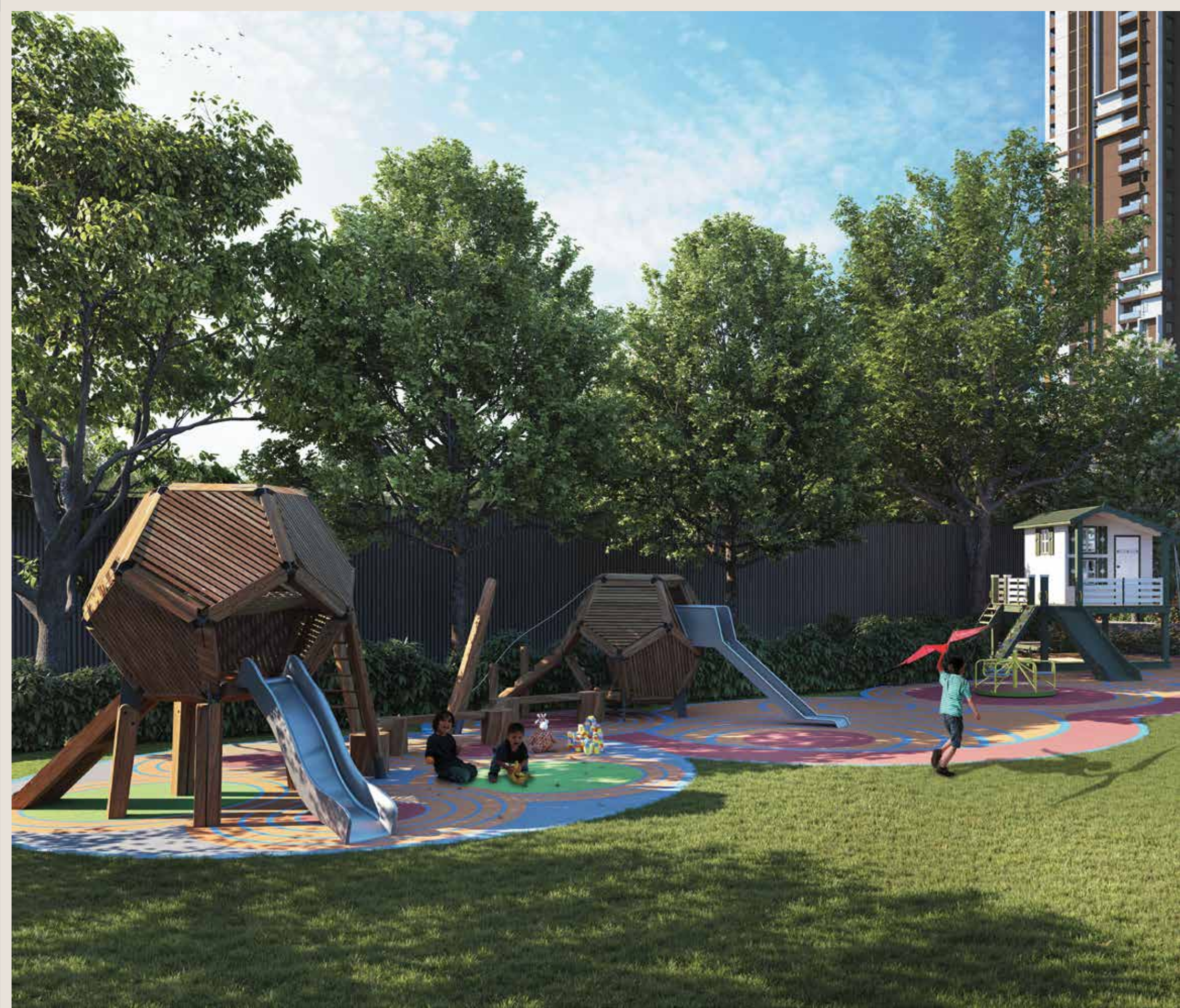
08

The Outdoor Fitness Area.
The Kids Play Area.



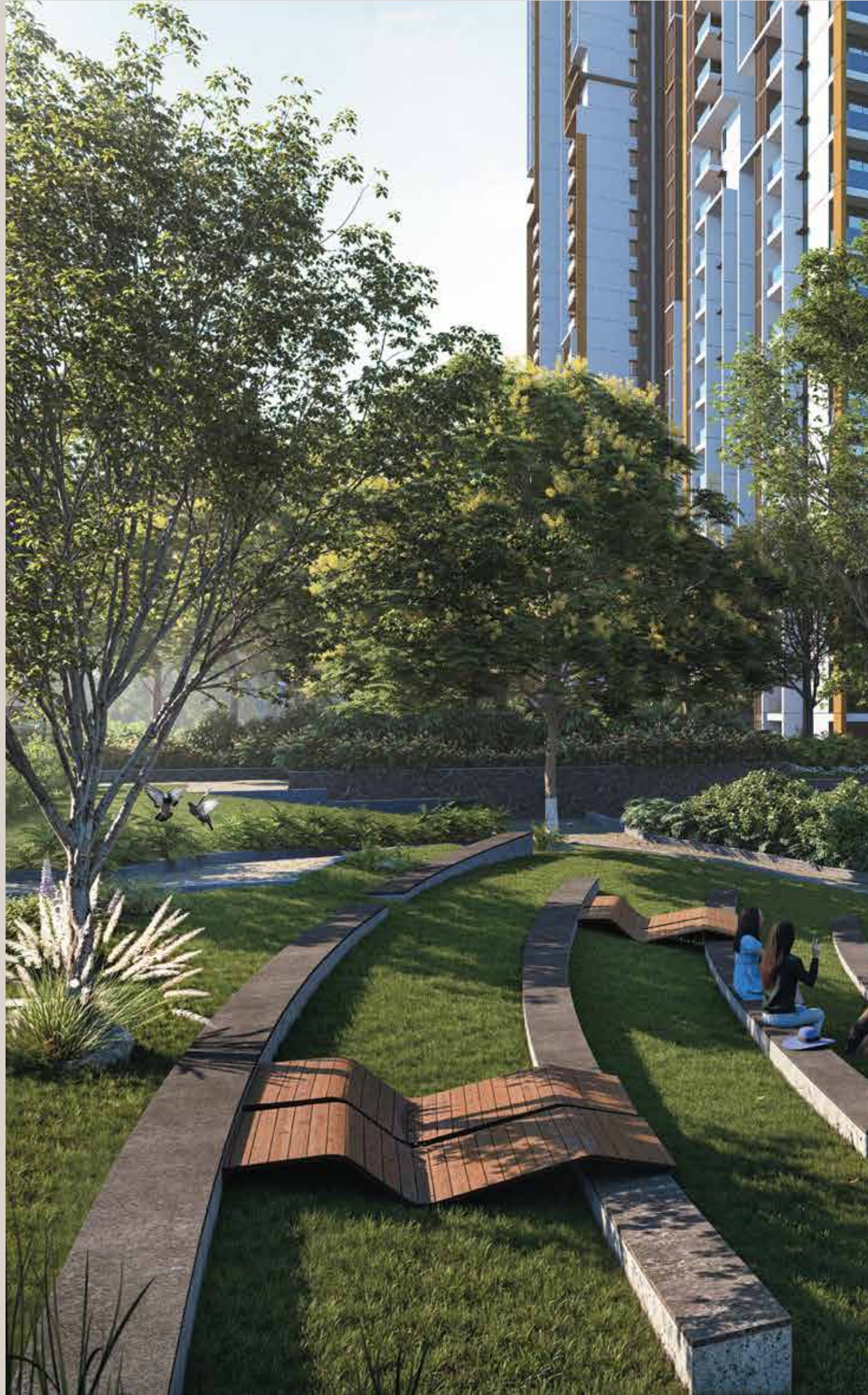


Discover the perfect blend of fitness and fun at The Address. The outdoor gym pods provide a refreshing workout experience, allowing residents to stay active while enjoying the fresh air. Meanwhile, the vibrant children's play area invites little ones to explore, climb, and play, fostering curiosity and social relations.



09

The large amphitheatre at The Address lies at the heart of the society, adjoining the vast multipurpose lawn. This beautiful venue offers an inviting space for residents to congregate, and allows hosting everything; music concerts, movie nights, theatrical performances, festive celebrations, etc. Embrace the beauty of an outdoor entertainment within a pivotal setting.



ENTERTAINMENT

UNDER THE OPEN SKY.





10

Elevate your leisure time with our finely designed golf putting course. The golf putting course offers a serene space for residents to practice their short game while enjoying beautifully landscaped surroundings. Well-suited for all skill levels, it's an ideal spot for relaxation and friendly competition.

Our basketball full court features professional-grade flooring and ample space for both casual play **and organized games.** Whether you're shooting hoops with friends **or joining the community league,** this vibrant court fosters an active lifestyle among neighbours.

For every shot.

For every dunk.

For every smash.

For every step.

11

For the sportsperson within you.

Unleash your energy and passion for sports in our Skate Park and Tennis Court, designed to cater to all ages and skill levels. Whether you're perfecting your skills or enjoying a casual ride/game with friends, The Address is the ideal spot for thrill-seekers.



Where every evening, is
an evening to remember.



DSR The Address offers seating pavilions with beautiful flowering trees, as well as cozy campfire spots for group sessions. Experience nightfall like never before, with every moment becoming a memorable masterpiece.

note to reader : this is a flap to be opened



12

TURNING OUR VISIONS,
INTO YOUR REALITY.



The 59,000 sft. Modern clubhouse.

13

The Clubhouse at The Address is a luxurious retreat, designed to elevate your lifestyle. This exclusive space offers something for everyone. Enjoy a refreshing dip in the sparkling pool, stay active in the unparalleled gym, or unwind in elegantly designed lounges. For social gatherings, the clubhouse features spacious event rooms, beautifully landscaped outdoor areas, and entertainment zones, creating the perfect setting for leisure and community living. Experience luxury, convenience, and comfort all in one place.

AND YOUR
REALITY IS
ENVIOUSLY
LUXURIOUS.

note to reader : this is the flap in open condition





14

WELCOME
TO THE
CLUB.



THE CLUB POOL

The Clubhouse at DSR The Address is a true epitome of luxury and leisure. As you step into the grand lobby, you are greeted by sophisticated interiors that set the tone for an unparalleled experience. The clubhouse boasts a serene swimming pool, perfect for relaxation, along with a range of world-class amenities designed to cater to your every need. Whether you're looking for fitness, entertainment, or a place to de-stress, this lavish retreat offers the perfect setting to elevate your lifestyle.

15

Indulge in pure relaxation at our luxurious spa, designed to offer a serene escape from the everyday, while our thoughtfully designed crèche ensures that your little ones are in safe hands while you enjoy the clubhouse amenities. With professional care and a playful environment, it's a perfect space for children to learn, play, and grow. Later, step into the vibrant indoor games room, for a game of table tennis, foosball, or board games. This space is crafted for fun-filled moments with family and friends.



SPA



CRECHE



INDOOR GAMES



BILLIARDS



GYM



CAFE



SPA | 01



CRECHE | 02



INDOOR GAMES | 03

RECLUSE AND RECREATION.

a little something



the billiards room (above), the gym (below) and the cafe (right) at The Address.



16

for everyone.



FITNESS AND REFRESHMENTS.

Whether you're a seasoned player or a **casual enthusiast**, the **elegant Billiards** room offers the ideal setting for friendly competition and leisurely enjoyment.

Elevate your fitness routine in our state-of-the-art gym. Designed for the health enthusiasts of all levels, this gym keeps you motivated and energized every day.

Unwind and socialize at our café, a haven for great conversations. With an inviting atmosphere and impeccable service, it's the perfect spot for post-workout relaxation or casual catch-ups.



HOMES THAT ARE
TAILOR-MADE, JUST
FOR YOU.



TOWER 1 & 5

Floors - (2nd to 17th, 19th to 27th & 29th to 30th)



TOWER 2 & 4

Floors - (2nd to 17th, 19th to 27th & 29th to 30th)

17

The Address offers a refined living experience with six thoughtfully designed towers, featuring spacious 2BHK, 3BHK & 4BHK units. Each home boasts large living and dining areas, expansive bedrooms, and is meticulously crafted with Vastu compliance. With a perfect balance of comfort and style, this community provides the ideal setting for modern family living.



TOWER 3

Floors - (2nd to 17th, 19th to 27th & 29th to 30th)



TOWER 6

Floors - (2nd to 12th)

TOWER LAYOUTS.

Six towers, one family.





the art of

Living Lavishly.

Spacious, sunlit, and elegantly appointed, the living room at The Address is a perfect blend of modernity and timelessness. The expansive windows offer a seamless connection between the indoor and the outdoors. Be it hosting guests or enjoying silence, this living room creates an ambience of refined relaxation and grandeur.



18

19

For the much needed
rest that you deserve.



Children's Bedroom.



Thoughtfully designed to offer ample space, natural light, and serenity, each room at **DSR The Address** serves as a personal sanctuary where style meets comfort. With generous layouts and sophisticated finishes, these bedrooms provide the perfect setting to unwind, recharge, and live effortlessly.



Your dreams are our priority.



At The Address, experience boundless luxury in a spacious master bedroom, where every detail is curated for a restful and refined living experience.

With abundant storage space, expansive balconies and a generous spatial layout, this is what fulfilled dreams look like.



20



club & pool.



art & craft area.



café.



spa.



cycling track.



crèche.

1234567891011121314151617

indoor games.



gymnasium.



multipurpose lawn.



billiards.



campfire area.



With over thirty-five amenities, 'bored' is not an emotion we welcome,



seating pavilions.



outdoor gym.



WFH space.



skate park.



basketball court.

18 19 20... 35 +

golf course.



kids play area.



pet park.



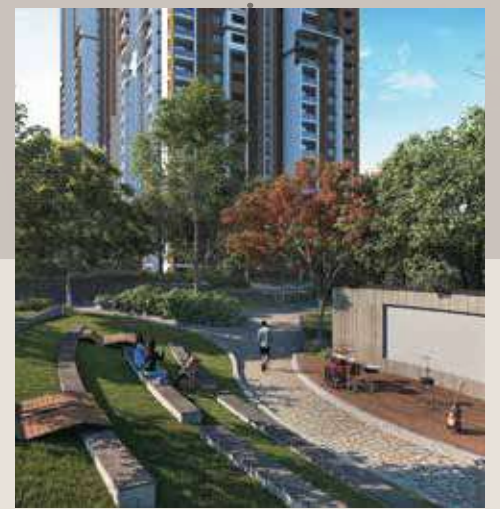
tennis court.



elders seating.



amphitheatre.



...because at every turn of every corner, something exciting awaits.

PROJECT
SPECIFICATIONS.

SUPER STRUCTURE:

RCC 'Shear Wall Structural System' to withstand Wind and Seismic loads as per the relevant IS Codes.

DOORS & WINDOWS:

Main Door & Internal Doors	:	Factory Moulded Engineered Wood door frame, flush door shutter with laminated finish on both sides with hardware of reputed make.
Toilets & Utility Doors	:	Factory Moulded Engineered Wood door frame and flush door shutter with water proofed phenol bonded resin with enamel finish over resin on one side & laminated finish on the other side with hardware of reputed make.
French Doors	:	UPVC door frame with Sliding glass shutters and mosquito mesh.
Windows	:	UPVC windows with Sliding glass shutters and mosquito mesh.
Ventilator	:	UPVC / Aluminium Ventilators with provision for exhaust fan.

BALCONY RAILING:

Aluminium seamless glass railing system with laminated glass.

PAINTING:

External	:	Textured finish with Exterior Emulsion Paint.
Internal	:	Smooth putty finish with Premium acrylic emulsion paint.

FLOORING:

Bedrooms, Living, Dining & Kitchen	:	Vitrified Tiles
Bathrooms	:	Anti-skid Ceramic Tiles
Balconies, Utility	:	Anti-skid Ceramic Tiles
Corridor	:	Vitrified/Ceramic tile flooring
Staircases	:	Polished Kota/Tandoor Stone/Granite

TILES CLADDING & DADOING:

Bathrooms	:	Ceramic tiles dado of reputed make up to door height
Utilities/Wash	:	Ceramic tiles dado of reputed make up to 3ft height

KITCHEN AND UTILITY:

Kitchen	:	Treated water connection and provision for water purifier, provision of inlet and outlet for kitchen sink.
Utility	:	Provision for washing machine, dishwasher and SS single bowl sink with granite counter.

BATHROOMS:

All Bathrooms shall consist of;

1. Wash Basin with half pedestal of Vitra or equivalent make with basin mixer
2. EWC with concealed Flush tank/Flush valve of Vitra or equivalent make.
3. Hot and Cold concealed single lever diverter with head shower and hand shower
4. Provision for geyser in all bathrooms.
5. All C.P. fittings are chrome plated Vitra or equivalent make.

ELECTRICAL:

1. Concealed copper wiring of Polycab/Anchor or equivalent make.
2. Power outlets for Air-Conditioners in all bedrooms
3. Power outlets for geysers in all bathrooms
4. Power outlets for chimney, refrigerator, microwave oven, mixer grinder and Water purifier in kitchen.
5. Provision for television in Drawing/Living and Master bedroom.
6. Miniature Circuit Breakers (MCB) & ELCB for each distribution boards of Schneider's or equivalent make.
7. Elegant designer modular electrical switches of Anchor/Schneider's or equivalent make.
8. Provision for EV charger in Car park area

TELE-COMM. & INTERNET:

Telephone point	:	Drawing/living room and Master Bedroom.
DTH/Cable TV	:	Provision for cable connection in Master Bed room and Drawing/Living
Internet point	:	Drawing/Living room

SECURITY:

1. Provision for Intercom facility to all units connecting security, club house and other common areas
2. Stand alone video door phone for every unit.
3. CCTV surveillance at project entry, exit, driveways, lifts and GF lift lobby for each block

ELEVATORS:

Branded automatic elevators with Granite/Vitrified cladding

GENERATOR:

100% power backup for common areas and flats

Leadership. Perseverance. Pride. Loyalty.

A beginning that redefined excellence over three and a half decades ago. DSR set its firm foot in the construction arena of South India. Through the years, we at DSR Group have carved a niche for ourselves in the realty sector for premium housing, fabulous internal & external amenities, as well as, the timely possession of properties as promised. We are constantly in the pursuit of redefining luxury living across cities like Bengaluru, Hyderabad and Chennai. Every project delivered since then till date is a credible example of our robust structure, innovation and opulence.

A Project by



Disclaimer.

None of the images, stock photography, projections, materials, descriptions, details or other information displayed in the audio visual/walkthrough can be deemed to constitute an advertisement or a solicitation, or an offer for sales within the purview of RERA. E-bookings or allotments based on images, stock photography, or projections displayed in the audio-visual/walkthroughs will not be accepted.



